

# 2019 State Accountability Results

## Overall

### Rating: B

88



Together...  
We Build Tomorrow!

#WEARECLINTISD  
CLINT • GARRETT • CANTON • INNOVATION • BUFFALO • TRANSAKON

# A-F State Accountability Overview

## Domain I: Student Achievement

### Elementary & Middle Schools:

- **STAAR Performance (100%)**
  - % Approaches, % Meets, and % Masters

### High Schools:

- **STAAR Performance (40%)**
  - % Approaches, % Meets, and % Masters
- **CCMR - College, Career, Military Readiness (40%)**
- **Graduation Rate (20%)**

## Domain II: School Progress

### Part A: Academic Growth

- Based on **Student Growth and Performance in Reading & Math**

### Part B: Relative Performance

- **STAAR Performance** compared to a predicted performance based on **% Eco Dis**

## Domain III: Closing the Gaps

### # of Student Groups Meeting Targets

- 14 groups – Ethnicities, EcoDis, SPED, EL, Enrollment Groups

### Groups will be measured on:

- **STAAR Growth**
- **STAAR Performance** (*Approaches, Meets, Masters*)
- **EL Proficiency**
- **CCMR & Graduation**



Together...  
*We Build Tomorrow!*

# #WEARECLINTISD

COMMITTED • LEARNER-CENTERED • INNOVATIVE • NURTURING • TRANSSPARENT

# Clint ISD District & Campus Ratings

Level	Campus	Domain I	Domain II – Part A	Domain II – Part B	Domain III Scale Score	Best of Domain I-II (70%) Domain III (30%)	Overall Score	Overall Letter Grade
Elementary Schools	CTW	71 (C)	75 (C)	79 (C)	76 (C)	DII-B: 79 (55.3) DIII: 76 (22.8)	78	C Acceptable
	DHE	77 (C)	88 (B)	85 (B)	92 (A)	DII-A: 88 (61.6) DIII: 92 (27.6)	89	B Recognized
	FME	71 (C)	86 (B)	79 (C)	78 (C)	DII-A: 86 (60.2) DIII: 78 (23.4)	84	B Recognized
	MVE	73 (C)	86 (B)	82 (B)	79 (C)	DII-A: 86 (60.2) DIII: 79 (23.7)	84	B Recognized
	RSE	77 (C)	72 (C)	85 (B)	83 (B)	DII-B: 85 (59.5) DIII: 83 (24.9)	84	B Recognized
	WDS	71 (C)	77 (C)	78 (C)	73 (C)	DII-B: 78 (54.6) DIII: 73 (21.9)	77	C Acceptable
Middle Schools	CJHS	76 (C)	69 (D)	87 (B)	74 (C)	DII-B: 87 (60.9) DIII: 74 (22.2)	83	B Recognized
	EMMS	71 (C)	63 (D)	82 (B)	61 (D)	DII-B: 82 (57.4) DIII: 61 (18.3)	76	C Acceptable
	HMS	73 (C)	63 (D)	82 (B)	64 (D)	DII-B: 82 (57.4) DIII: 64 (19.2)	77	C Acceptable
	REMS	78 (C)	70 (C)	89 (B)	70 (C)	DII-B: 89 (62.3) DIII: 70 (21.0)	83	B Recognized
High Schools	CECA	96 (A)	90 (B)	96 (A)	100 (A)	DI: 96 (67.2) DIII: 100 (30.0)	97	A Exemplary
	CHS	88 (B)	83 (B)	93 (A)	81 (B)	DII-B: 93 (65.1) DIII: 81 (24.3)	89	B Recognized
	HHS	81 (B)	79 (C)	82 (B)	76 (C)	DII-B: 82 (57.4) DIII: 76 (22.8)	80	B Recognized
	MVHS	83 (B)	84 (B)	87 (B)	77 (C)	DII-B: 87 (60.9) DIII: 77 (23.1)	84	B Recognized
District	Clint ISD	85 (B)	79 (C)	91 (B)	80 (B)	DII-B: 91 (63.7) DIII: 80 (24.0)	88	B Recognized



Together...  
We Build Tomorrow!

#WEARECLINTISD

COMMITTED • DIVERSITY • COLLEGE • INNOVATIVE • EFFICIENT • TRANSFORMING

# Distinction Designations

Clint ISD earned 30 distinctions in 2019!  
13 more than 2018!

Level	Campus	Academic Growth	Closing the Gaps	Reading/ELA	Math	Science	Social Studies	Post-secondary Readiness
Elementary Schools	CTW							
	DHE	★	★		★			★
	FME	★						
	MVE	★			★			
	RSE			★				★
	WDS							
Middle Schools	CJHS			★				
	EMMS						★	
	HMS							
	REMS	★		★		★	★	★
High Schools	CECA		★	★				★
	CHS		★	★	★	★	★	★
	HHS				★	★	★	★
	MVHS		★					
District	Clint ISD							



Together...  
We Build Tomorrow!

#WEARECLINTISD

COMMITTED • DIVERSITY • COLLEGE • INNOVATIVE • EFFICIENT • TRANSPARENT

# 2018 to 2019 Comparison



	2018 Overall Ratings		2019 Overall Ratings		Gain Score
	Rating	Score	Rating	Score	
<b>CLINT ISD</b>	<b>B</b>	<b>81</b>	<b>B</b>	<b>88</b>	<b>7</b>
CARROLL T WELCH EL	C	74	C	78	4
DESERT HILLS EL	C	73	B	89	16
FRANK MACIAS EL	D	69	B	84	15
MONTANA VISTA EL	C	76	B	84	8
RED SANDS EL	B	83	B	84	1
WM DAVID SURRATT EL	C	72	C	77	5
CLINT J H SCHOOL	B	84	B	83	-1
EAST MONTANA MIDDLE	C	73	C	76	3
HORIZON MIDDLE	C	78	C	77	-1
RICARDO ESTRADA MIDDLE	B	84	B	83	-1
CLINT H S	B	82	B	89	7
CLINT ISD EARLY COLLEGE ACADEMY	A	95	A	97	2
HORIZON H S	C	71	B	80	9
MOUNTAIN VIEW H S	C	73	B	84	11



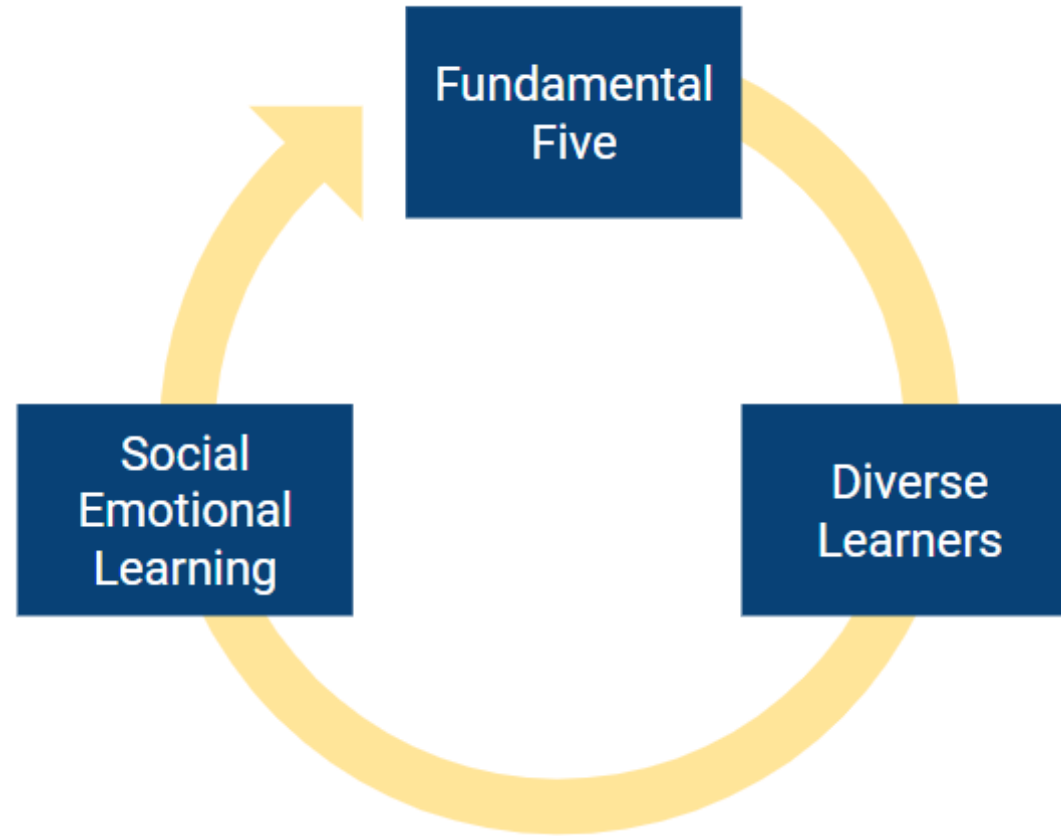
Together...  
We Build Tomorrow!

#WEARECLINTISD

CLINT ISD • GARDEN CITY ISD • HORNADO VALLEY ISD • HORNADO VALLEY ISD • SIERRA BLANCA ISD

District	2018 Overall Scaled Score	2019 Overall Scaled Score	Gain Score
Clint ISD	81	88	7
Anthony ISD	81	88	7
Dell City ISD	61	67	6
Ysleta ISD	84	89	5
Fabens ISD	85	88	3
San Elizario ISD	86	89	3
El Paso ISD	86	88	2
Socorro ISD	88	90	2
Canutillo ISD	91	91	0
Ft. Hancock ISD	88	87	-1
Tornillo ISD	87	85	-2
Sierra Blanca ISD	86	71	-15

# Connecting Accountability to Instruction

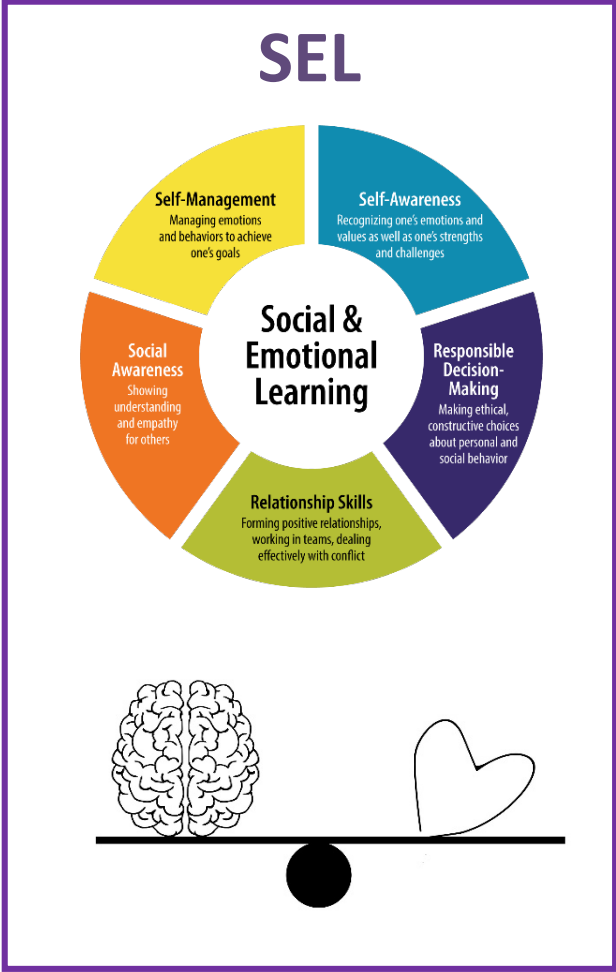
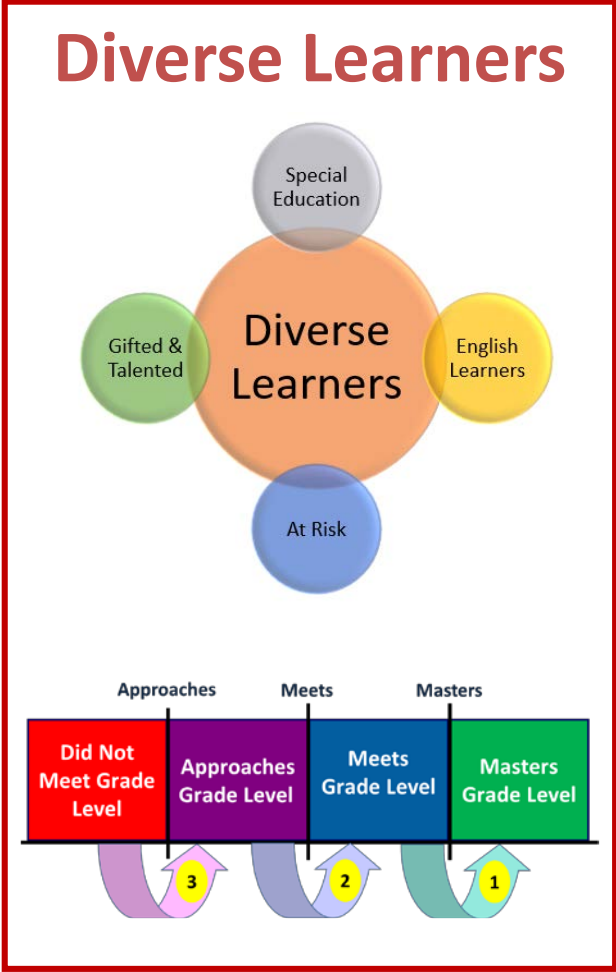


Together...  
*We Build Tomorrow!*

# #WEARECLINTISD

COMMITTED • LEARNER-CENTERED • INNOVATIVE • NURTURING • TRANSSPARENT

# Connecting Accountability to Instruction



Together...  
We Build Tomorrow!

# #WEARECLINTISD

COMMITTED • LEARNER-CENTERED • INNOVATIVE • NURTURING • TRANSPARENT

# Clint ISD Accountability Support Team

## Mark Ayala

- Assistant Superintendent of Accountability and Student Achievement

## Jessie Cline

- Data & Accountability Coordinator

## Alejandra Briseno-Sanchez

- Testing Coordinator

## Rodrigo Hernandez

- Elementary Special Education Coordinator

## Domingo Jauregui

- Secondary Special Education Coordinator

## Veronica Candelaria\*

- Director of Bilingual/ESL

## Jorge Altamirano

- BE/ESL Coordinator

## Norma Estrada-Keith

- BE/ESL Coordinator

## Jesus Munoz

- BE/ESL Coordinator

## Olga Hernandez

- BE/ESL Coordinator

## Instructional Coaches\*

### Amanda Rueda\*

(Elementary)

### Jaime Martinez\*

(Middle School)

### Tarin Barrow\*

(High School)



Together...  
*We Build Tomorrow!*

# #WEARECLINTISD

COMMITTED • LEARNER-CENTERED • INNOVATIVE • NURTURING • TRANSSPARENT